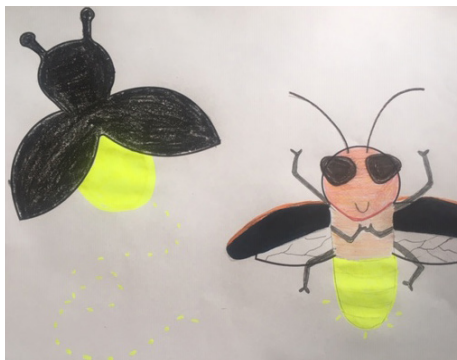


CREATE A FIREFLY!

Fireflies can be found right here in Brooklyn! They are a type of beetle, and thus contain 2 pairs of wings. The forewings are rigid and act as a covering or case. The hindwings allow flight. Unlike most beetles, the abdomen of fireflies have a bright glow due to bioluminescence.



MATERIALS YOU'LL NEED:

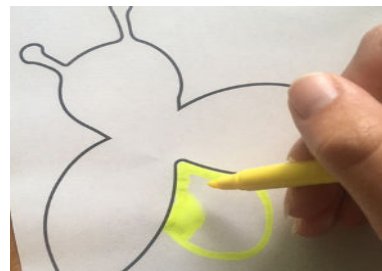
- Paper
- Highlighter
- Crayons, colored pencils, or markers

STEP 1

Print the attached coloring page or free draw your own. If you want, you can even use these outlines as tracers to use on construction paper!

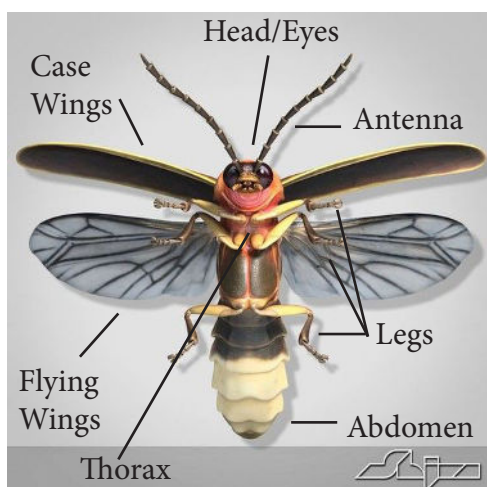
STEP 2

To create a simple firefly silhouette, you will need to color the outline black, then use highlighter to create the abdomen. For an even brighter effect, hang your silhouette in a window!



STEP 3

The anatomy of a firefly is a bit more complex than you might think! Take a look at the diagram and photos below. Then try making a more life-like firefly of your own. It is up to you to draw in the legs, eyes, and antenna!



Eastern Firefly (*Photinus pyralis*)



