

Brooklyn Bridge Park

Jay Street Sidewalk Realignment

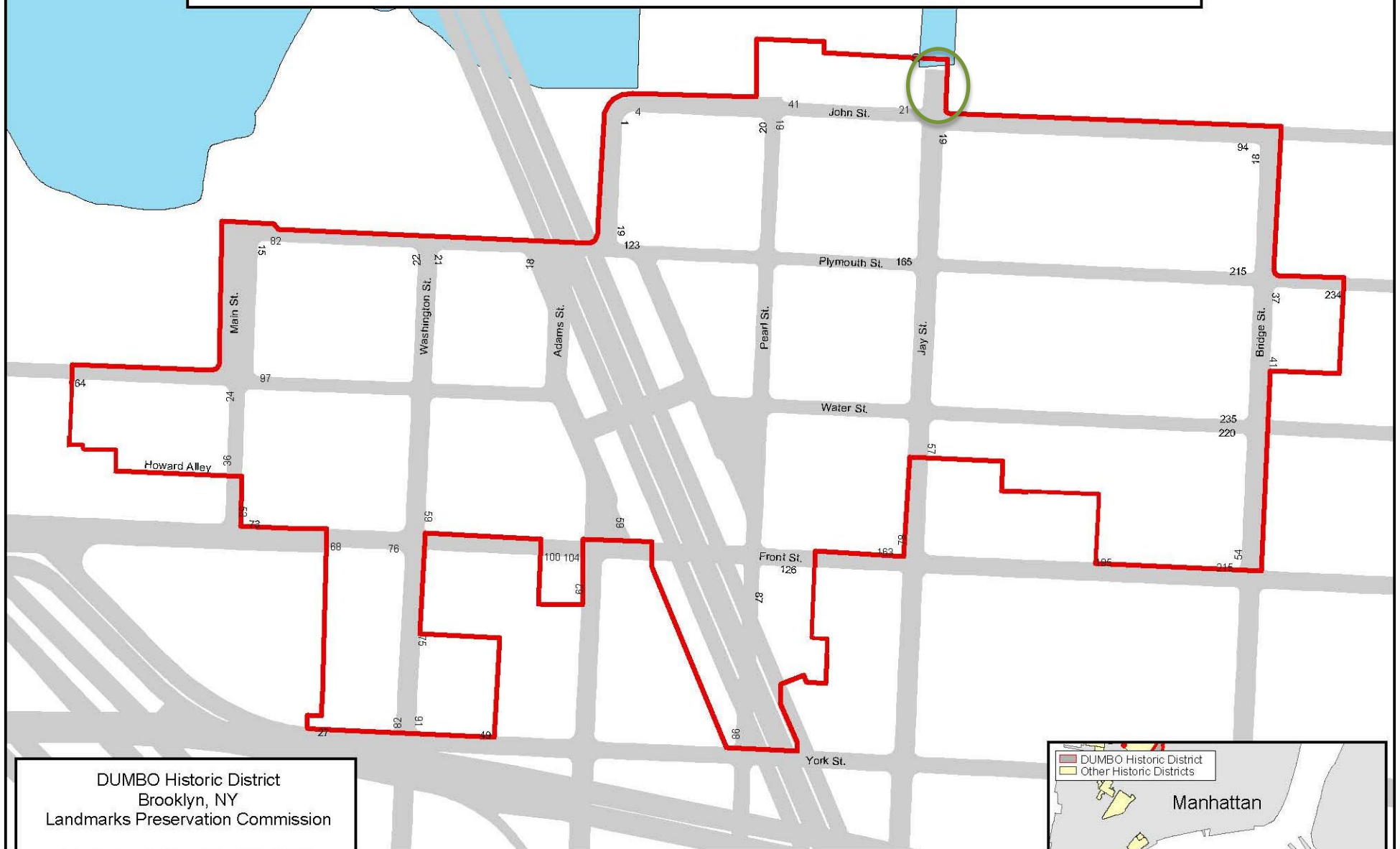
August 2013

- **Historic Character**
- **Current Conditions**
- **Proposed Changes**



Brooklyn Bridge Park
Rendering by Michael Van Valkenburgh Associates, Inc. ©Brooklyn Bridge Park Corporation

DUMBO Historic District



DUMBO Historic District
Brooklyn, NY
Landmarks Preservation Commission

Designated: December 18, 2007

 Historic District Boundary

0.05

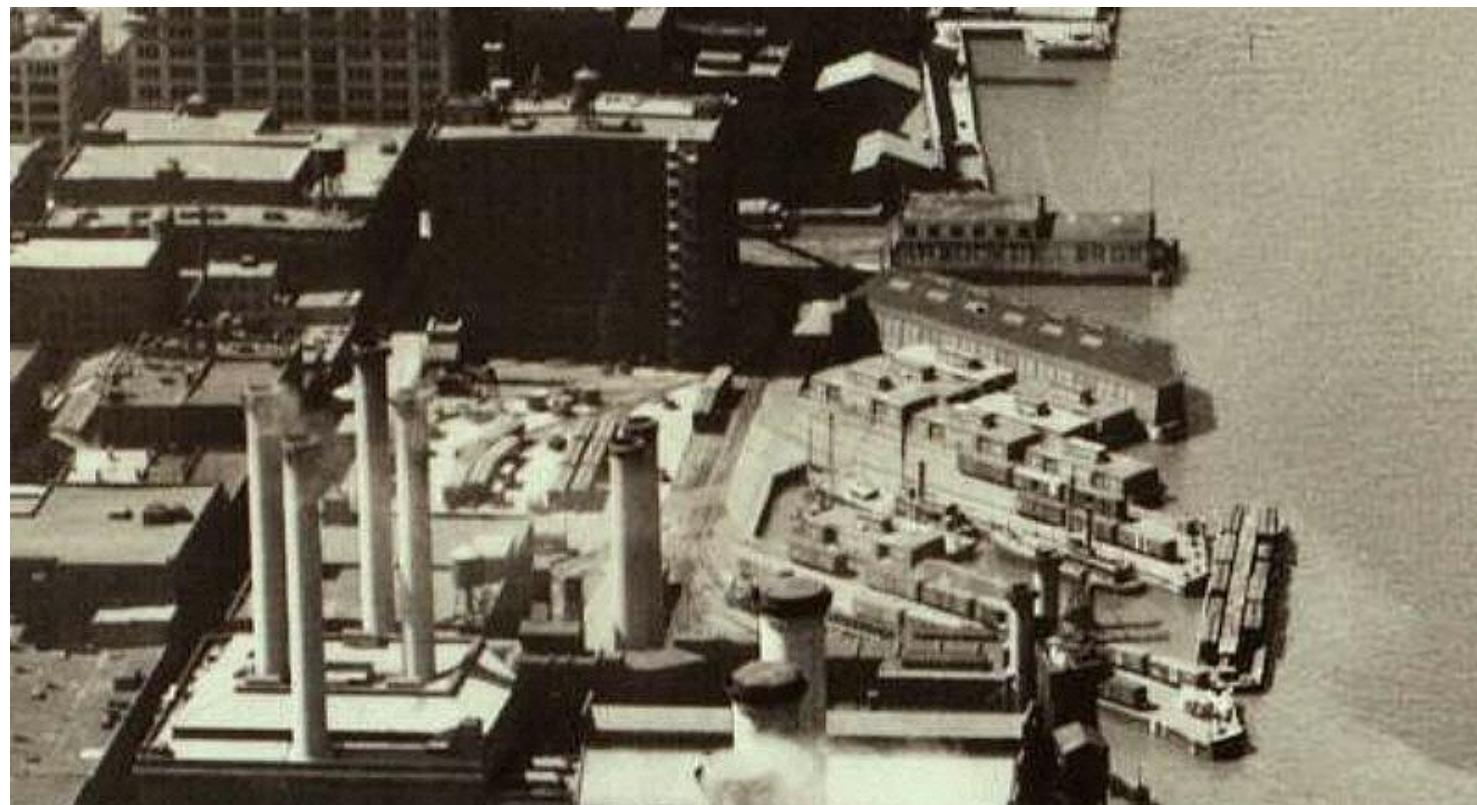
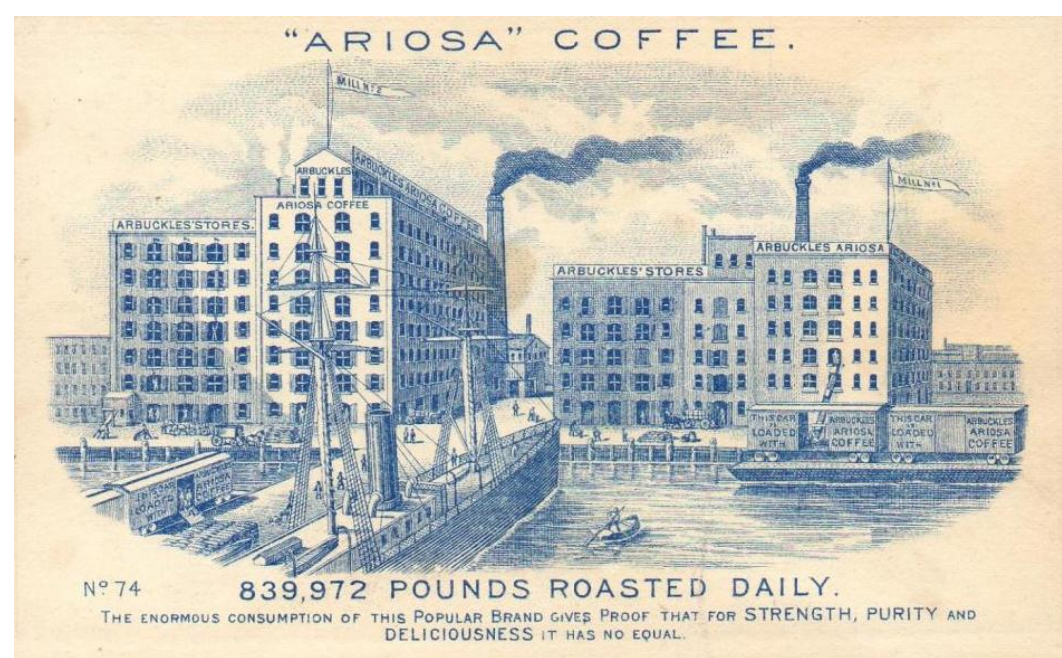
Miles

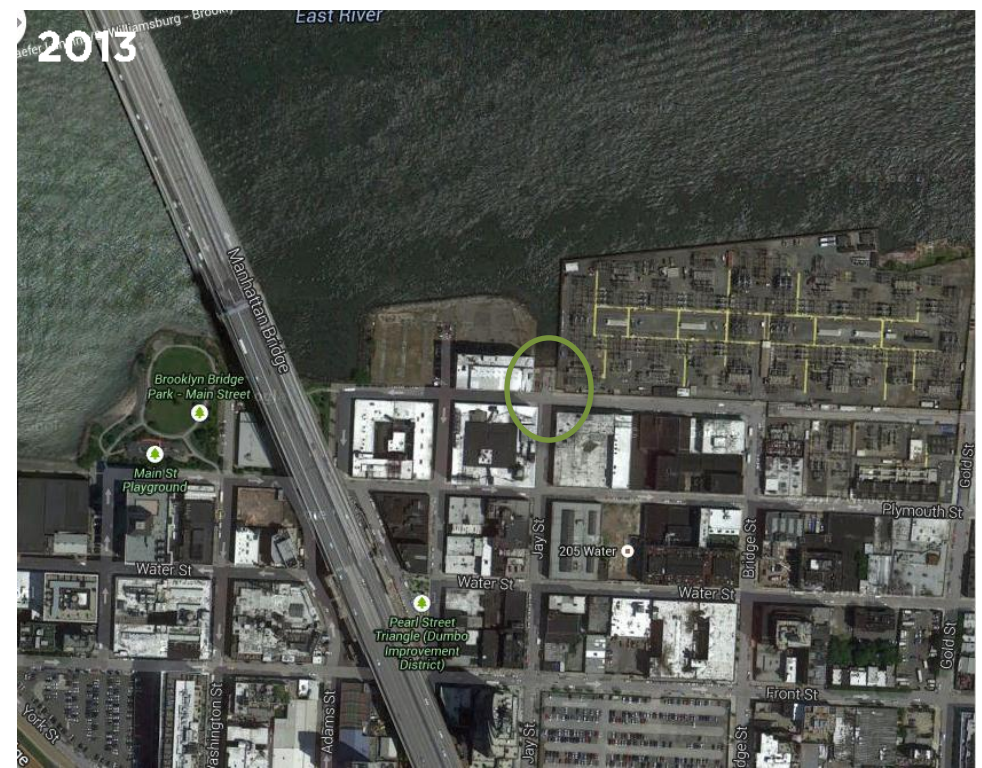
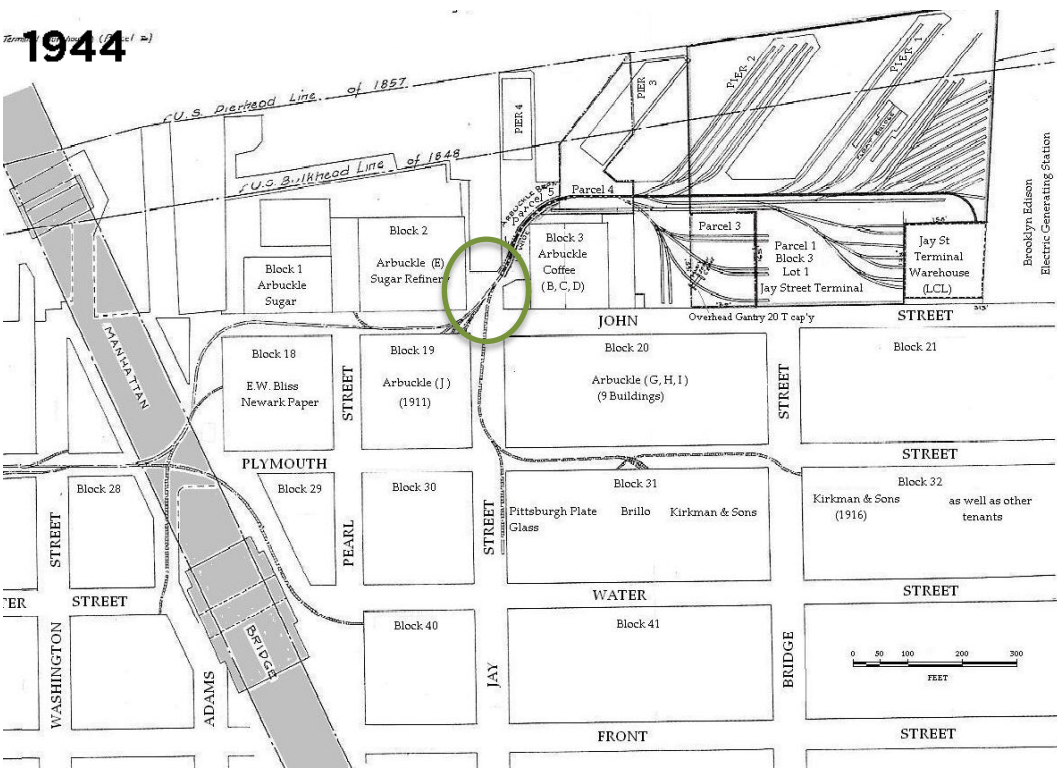
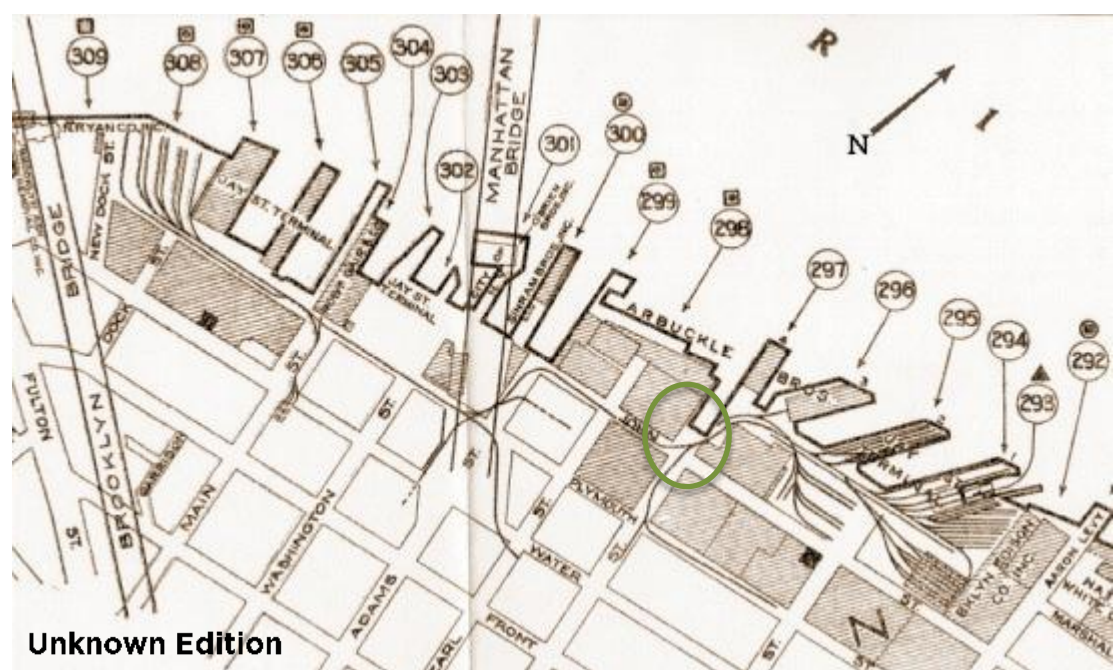
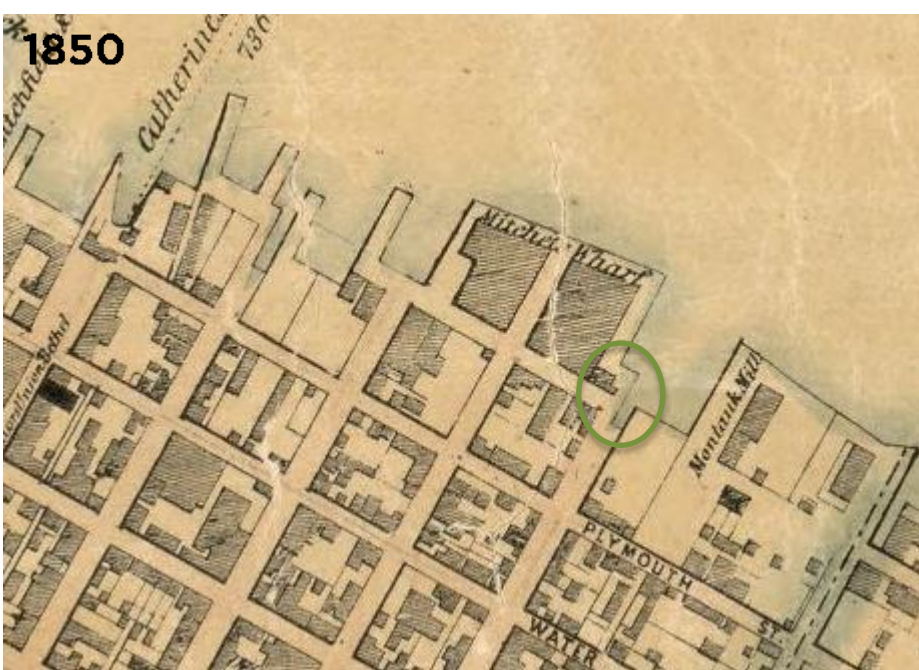


Graphic Source: New York City Department of City Planning, MapPLUTO, Edition 06C, 2006.
Author: New York City Landmarks Preservation Commission, J.M.

Historic Character

- **The Jay Street Connecting Railroad:** Operated as Brooklyn's smallest waterfront railway between 1904 and 1959, moving freight cars from carfloats on the East River to the industrial buildings and warehouses that would load and unload them.
- **10 Jay Street:** This building was erected on landfill by Arbuckle Brothers, a key figure in the marketing of coffee in America during the nineteenth century.



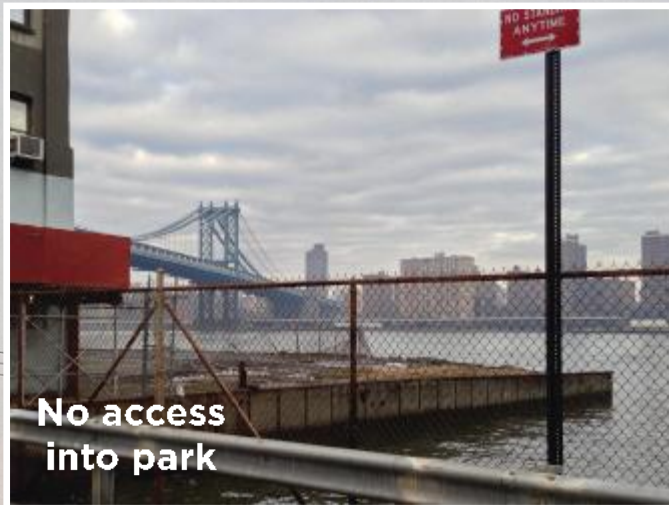


Current Conditions

- Former cobblestone and tracks of the Jay Street Connecting Railroad still exist buried beneath asphalt roadbed
- Entrance to 10 Jay Street is located on the east side of the building at Jay Street
- Dead end
- Perpendicular to westbound one-way traffic along John Street
- Con Edison power station and electrical switching yard now occupies preexisting terminal in the lot to the east of Jay Street
- Jay Street commercial corridor thrives with new businesses and residences



Jay Street at John Street (Northeast)



Existing 10 Jay Street
building entrance and
access ramp

No access
into park

No sidewalk at
end of Jay
Street

Existing steel-faced
curb and concrete
sidewalk



No sidewalk
along John
Street

Existing 10 Jay
Street building
entrance



Con Edison
power
station

Proposed Changes

- Curb realignment & creation of new plaza space to serve as northern entrance into Brooklyn Bridge Park
- Reinstall existing cobblestones for plaza surface material
- Preserve train tracks and reinstall on new surface
- Addition of granite planter & bollards
- Connection to new pedestrian bridge connecting to John Street site in Brooklyn Bridge Park



Reuse existing
cobblestones and
rail tracks



Add granite
planter

New curb line to
accommodate
future sidewalk
along John Street

Extend curb line 68' out
from bulkhead to meet
existing sidewalk
alignment to the east

10 Jay Street

BBP
Bike Racks

New
Cobblestones

BBP
Granite Bollards

Granite Curb

John Street

Concrete Connector
Bridge

BBP
Marine Rail

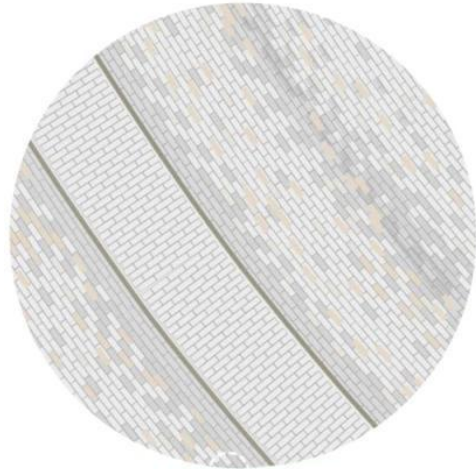
Salvaged Cobblestones
& Rail Tracks

Con Edison
Site

BBP
Planting
Typology

Tinted
Concrete
Sidewalk

**NYC DOT
Dumbo Street
Reconstruction
Typologies**



Salvaged Rail Line Detail



DOT Cobble Mock Ups

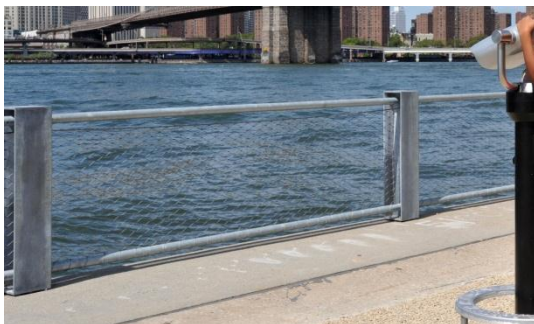
**Brooklyn Bridge Park
Furnishing & Material
Typologies**



Bike Racks



Salvaged Rail & Cobbles



Marine Railing



Planting Typology



Willis Avenue granite bollards



