

CRAFT

MAKE A SODA BOTTLE FISH



Step 1: Cut the bottom of a soda bottle. The top of the bottle will be the mouth of the fish. Use the bottom of the bottle to cut two fins in a half oval shape.



Step 2: Close together opening at the bottom of the bottle. Use a strong binder clip or staple to hold in place.



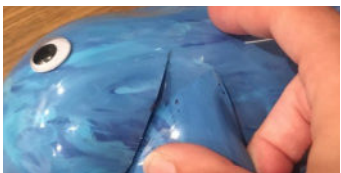
Step 3: Cut the bottom of the bottle to resemble a fish tail. Then make two slits near middle of the bottle, this is where the fins will go. Make sure your slits are long enough to fit the fins you previously cut out.



Step 4: Open the bottom of bottle back up so you can paint the inside. It is better to paint on the inside of the bottle so that the paint does not chip. Don't forget to paint your fins too!



Step 5: After the paint has dried, re-staple the back tail together. Give your fish eyes by gluing googly eyes or drawing them yourself with a sharpie mark or paint.



Step 6: Attach string to the top if you'd like to hang your decoration!

